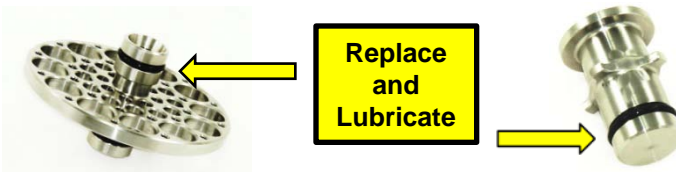


Membrane Loading Instruction



Membrane Loading Instruction

1. First Remove old membranes and keep existing stainless steel hardware (Interconnectors and End-plugs)
2. Replace O-Rings on stainless Interconnectors and End Plugs.



3. Load membranes from the Permeate end of the Vessel.
4. Lubricate permeate tube and insert End-plug into the first membrane.
5. Insert membrane, End-plug side first and push half of the membrane into the vessel.
6. Lubricate and insert interconnector into the other end of the membrane.
7. Lubricate o-ring and permeate tube of the next membrane and connect it to the first one, and slide it into the vessel.
8. Repeat these steps for each membrane, up to five membranes for each vessel housing.
9. Place permeate end cap on last interconnector and slide completely into vessel.
10. Place clamps on vessel. Membrane installation is complete.

Note: It is important to lubricate all o-rings and connection points with water based lubricant, i.e. KY Jelly, Dish Soap, Glycerin, etc., Do Not use Petroleum based lubricants. Lubrication keeps the o-rings from rolling out of place and causing a leak.

* See Diagram and Pictures below *



12255 Ensign Avenue
Champlin, MN 55316 USA

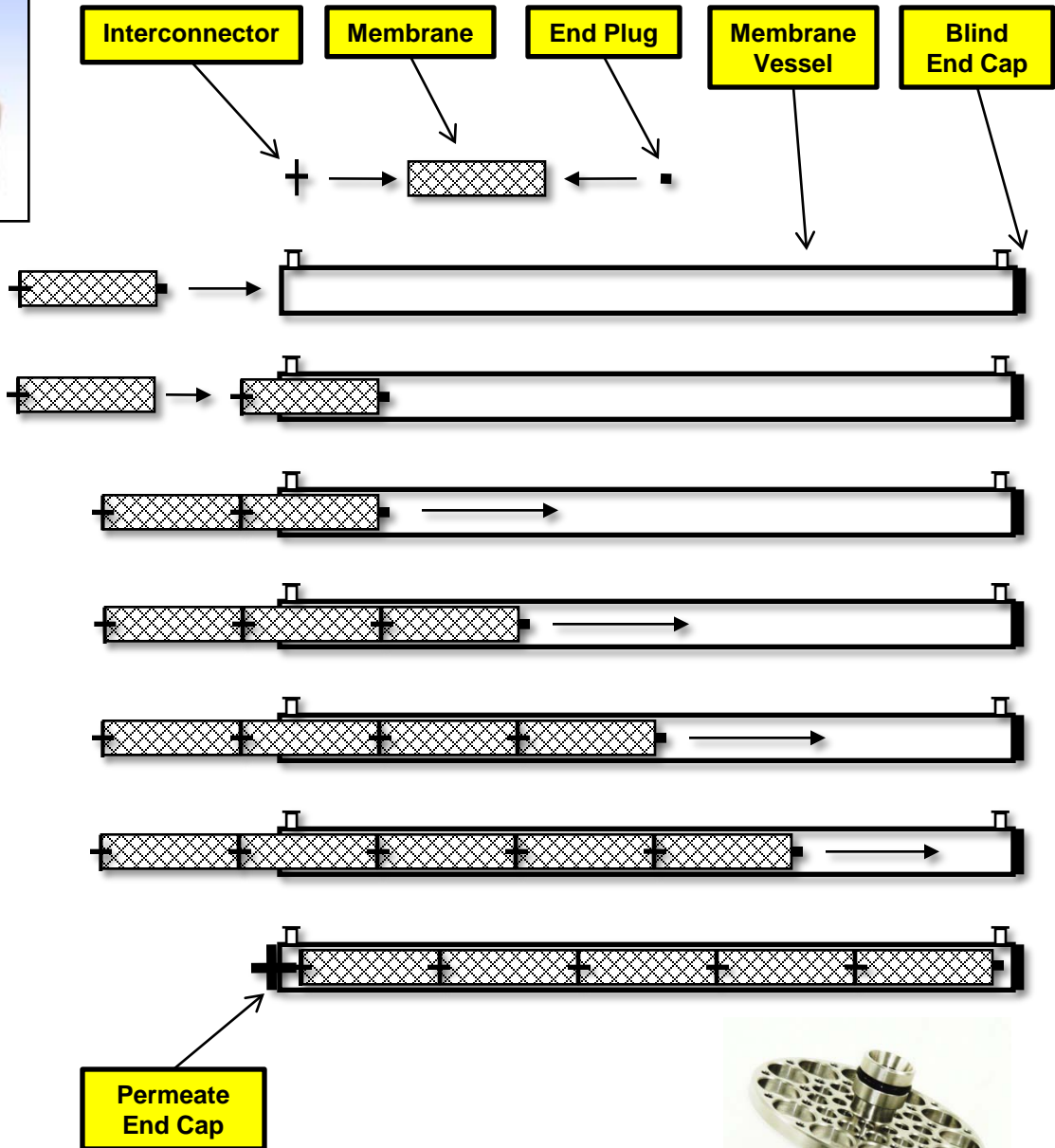
(763) 421-2721
sales@FiltrationEng.com

FILTRATIONENG.COM

Membrane Loading Instruction



Membrane Loading Instruction



12255 Ensign Avenue
Champlin, MN 55316 USA

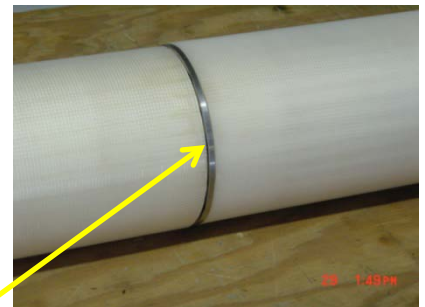
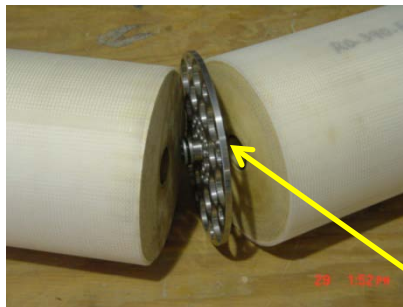
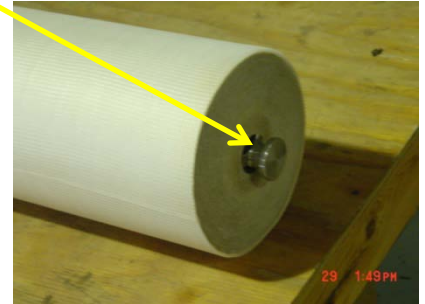
(763) 421-2721
sales@FiltrationEng.com

FILTRATIONENG.COM

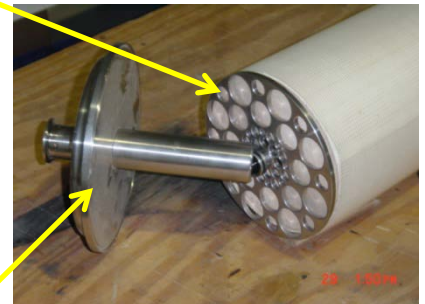
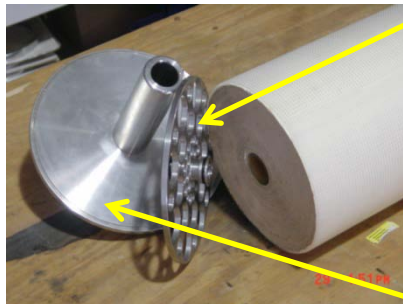
Membrane Loading Instruction



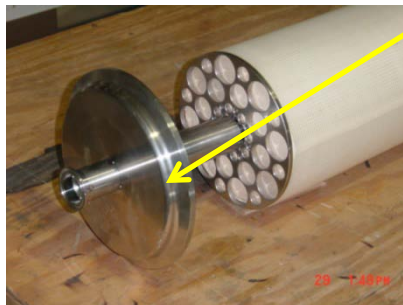
End Plug



Interconnector



Permeate End Cap



12255 Ensign Avenue
Champlin, MN 55316 USA

(763) 421-2721
sales@FiltrationEng.com

FILTRATIONENG.COM